



APNIC Status Report

IEPG

Oslo, July 1999



Overview

- Staff
- Membership
- Resources
- Services



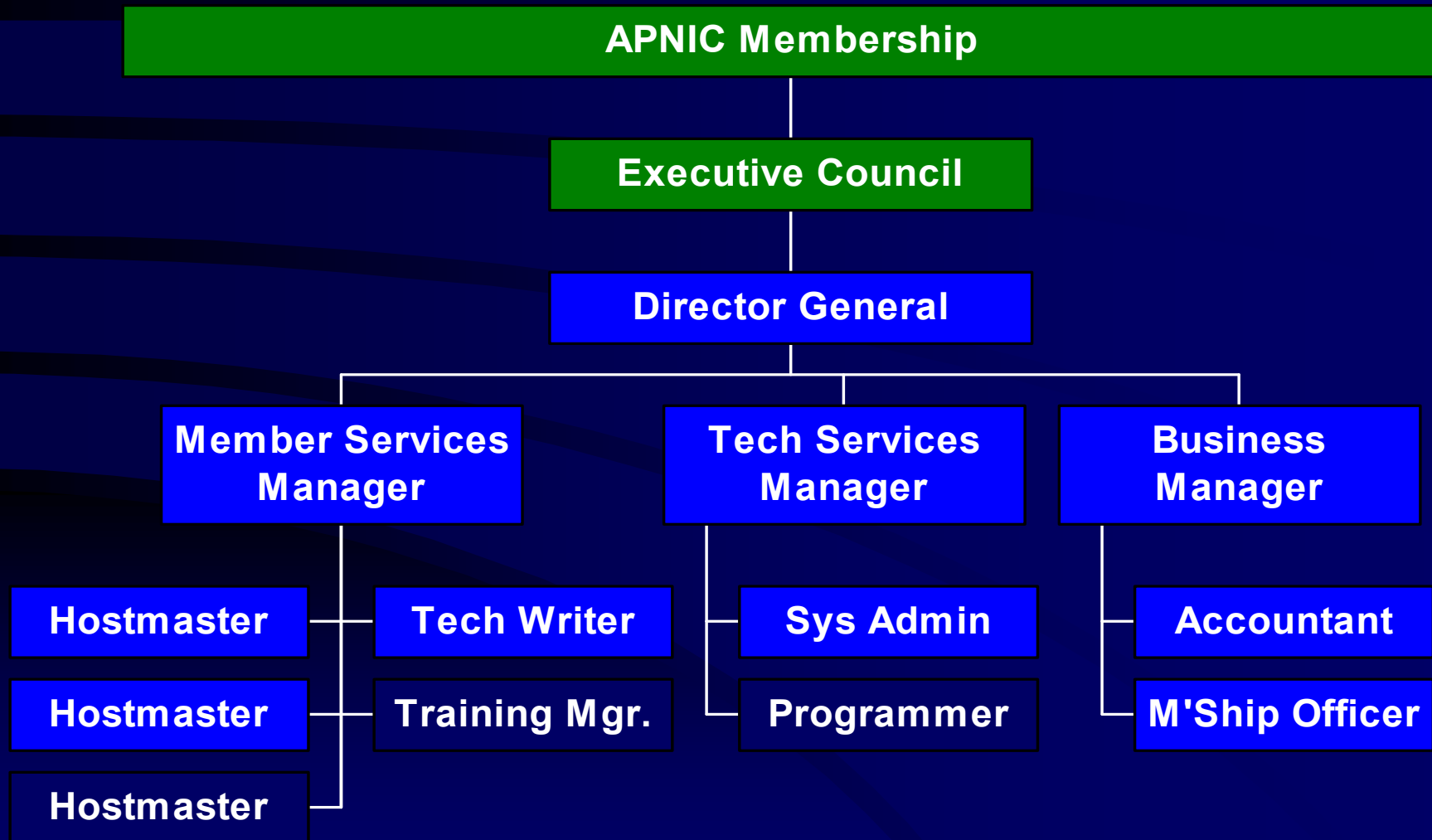
APNIC Staffing

APNIC Recruitment

- Aug 1998: 6 staff
- Mar 1999: 8 staff
- Jun 1999: 10 staff
- Sep 1999: 13 staff

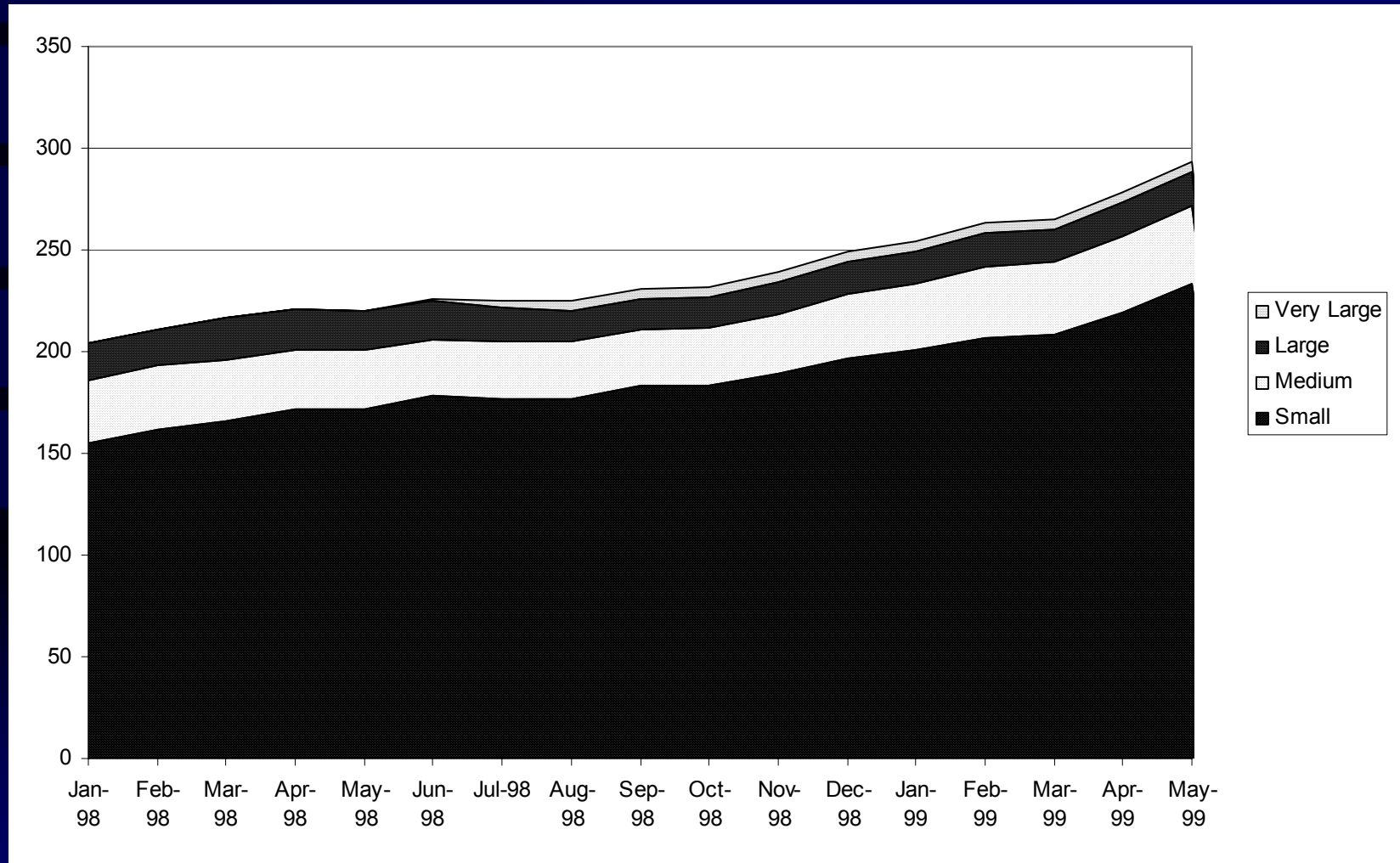


APNIC Staffing





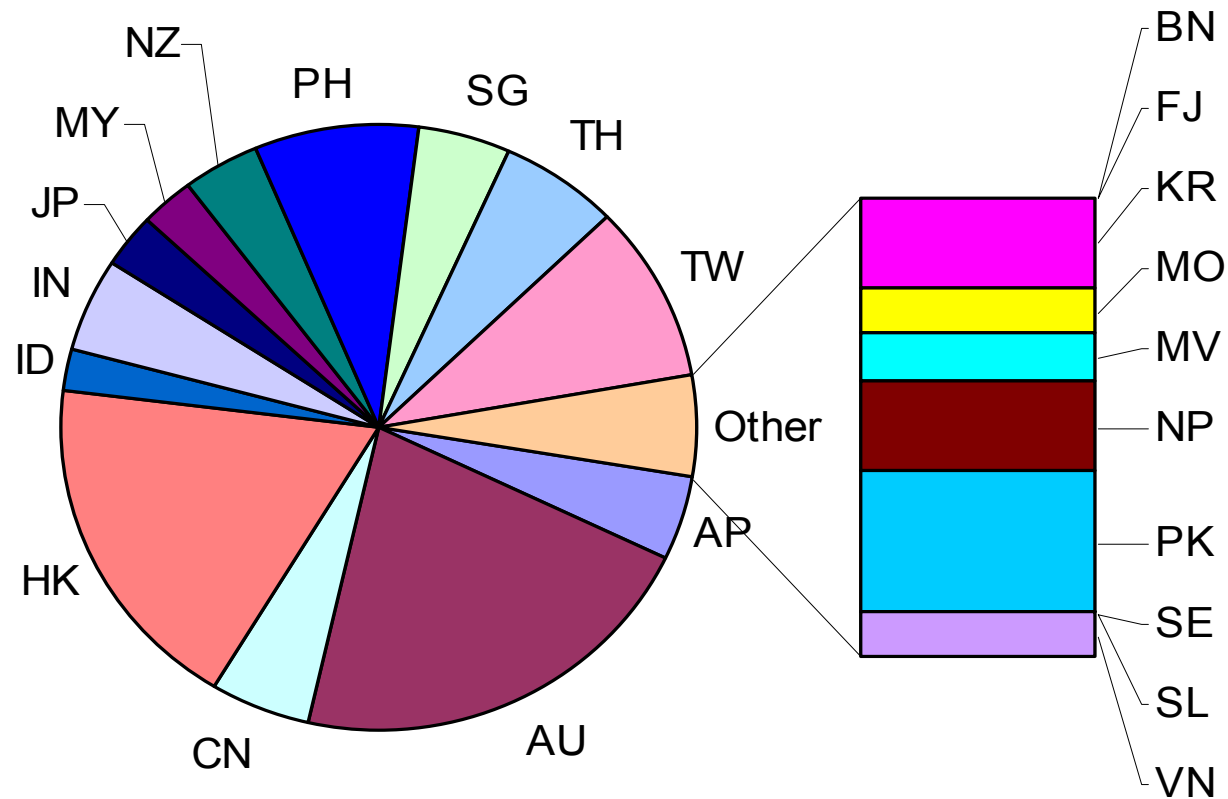
APNIC Membership





APNIC Membership

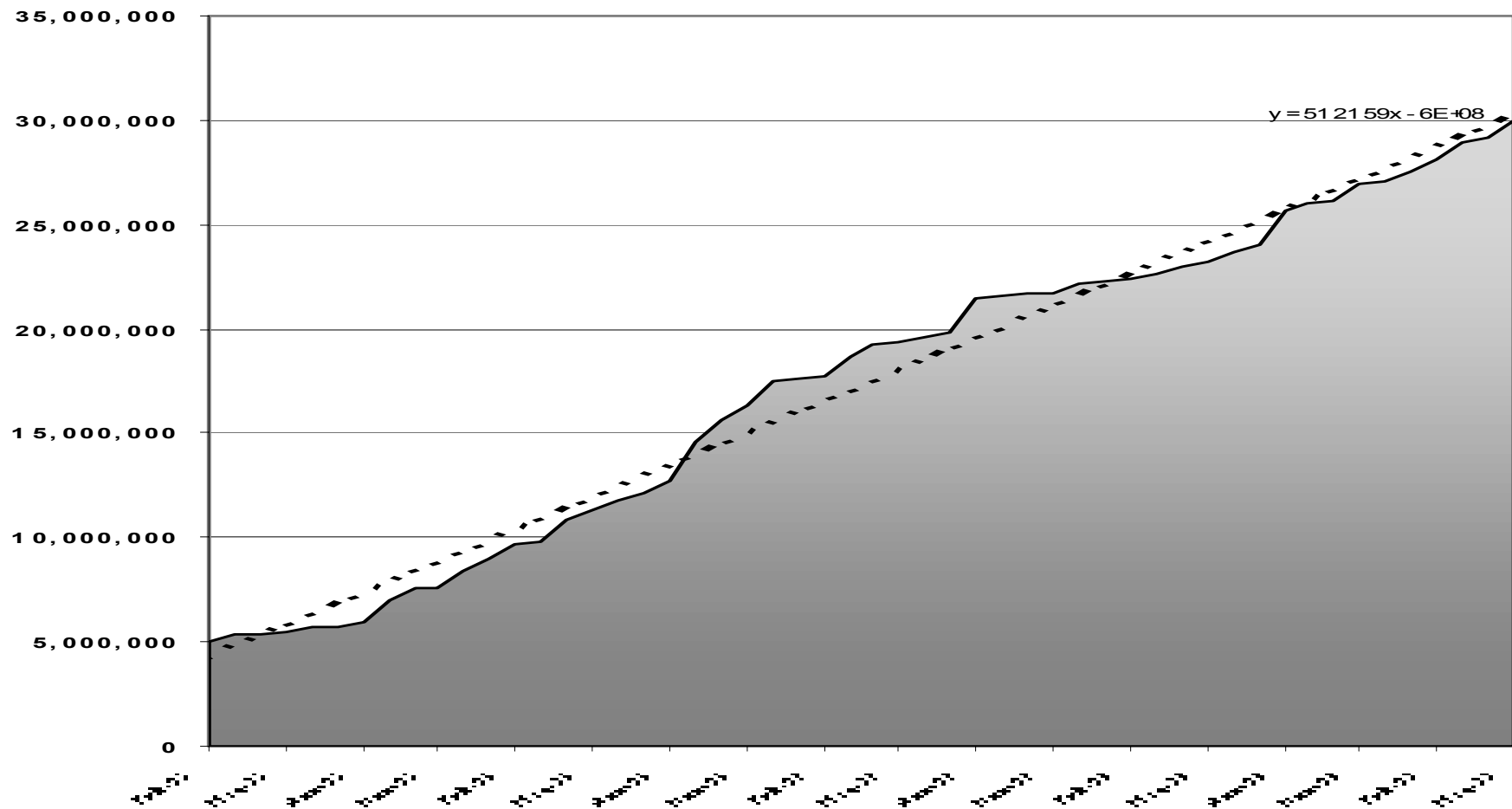
Members as at June 1999





APNIC Resources

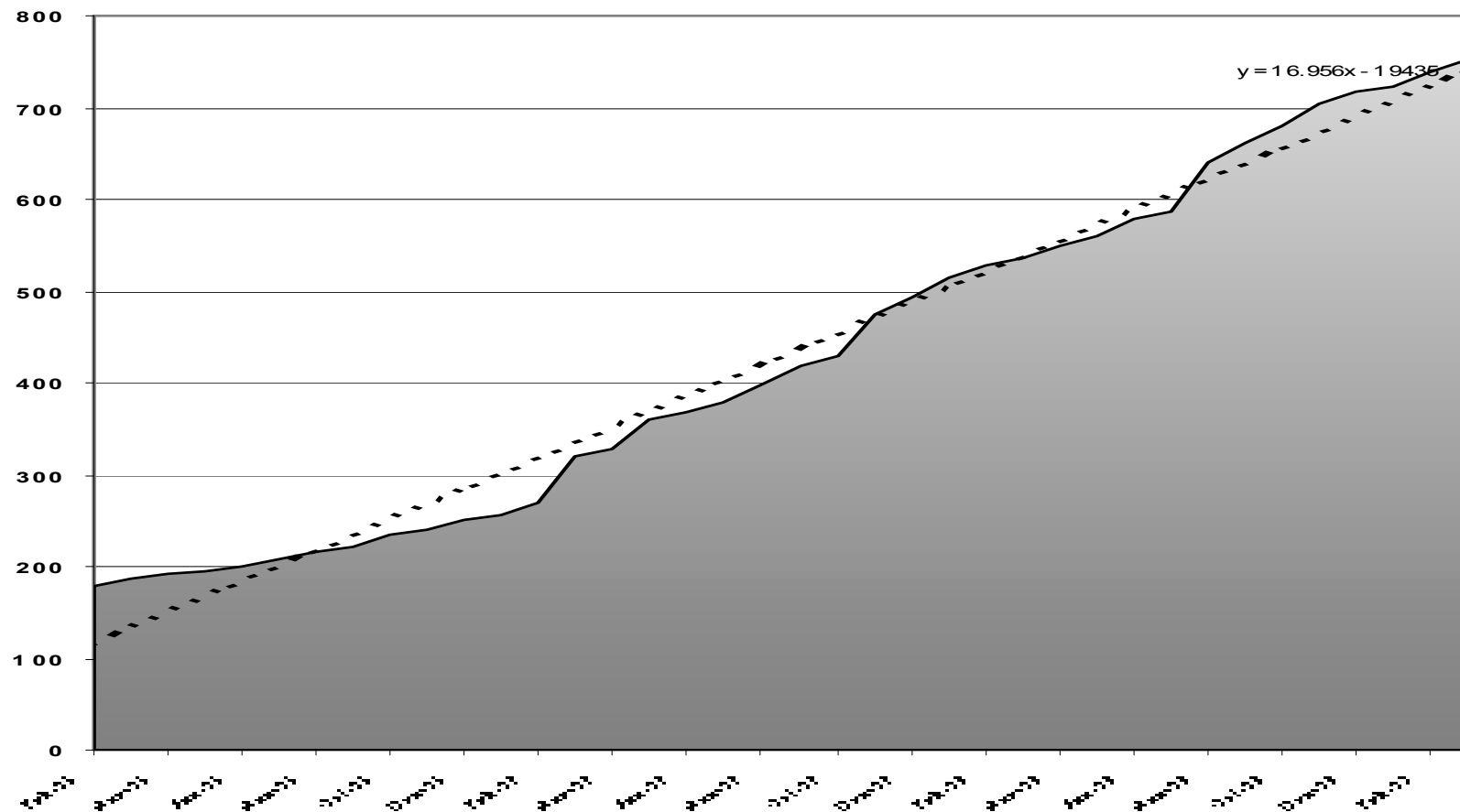
IP Allocations





APNIC Resources

AS Allocations





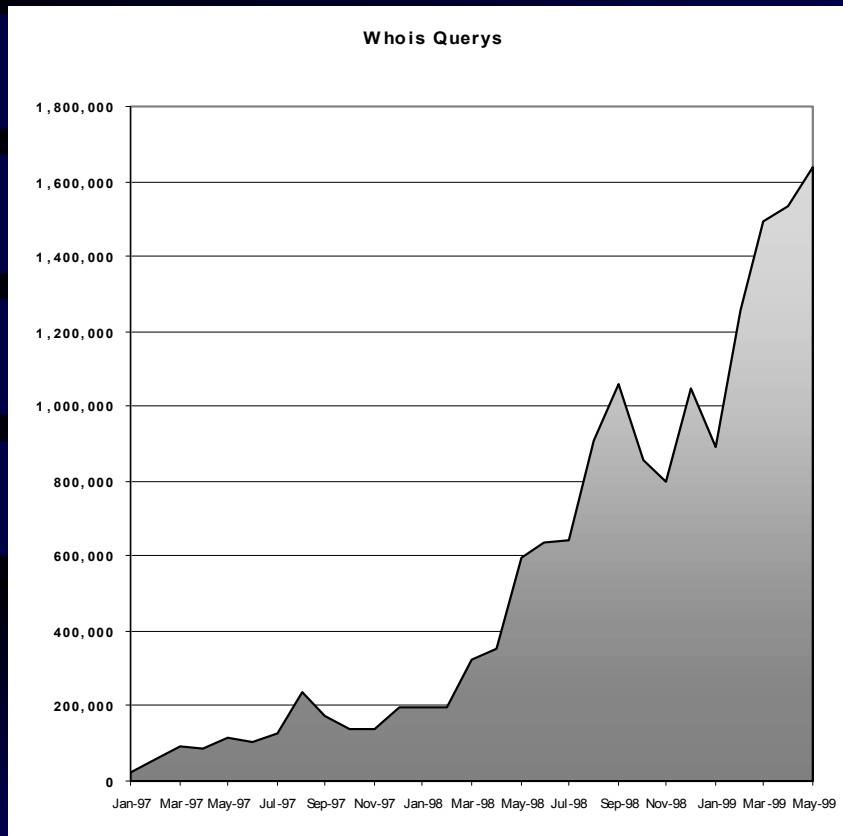
APNIC Resources

<i>Address Block</i>	<i>Addresses</i>	<i>%Allocated</i>	<i>%Free</i>	<i>Date Delgated by the IANA</i>
202/7	33554432	81.73	18.27	10 January, 1994
169.208/12	1048576	0.00	100.00	6 June, 1995
210/7	33554432	73.52	26.48	16 September, 1996
24.192/14	262144	6.25	93.75	7 December, 1998
61/8	16777216	0.83	99.17	25 April, 1997
<i>Total</i>	85,196,800	47.76	52.24	

<i>As Block</i>	<i>Ases</i>	<i>%Allocated</i>	<i>%Free</i>	<i>Date Delgated</i>
4608-4863	256	98.83	1.17	10 January, 1994
7467-7722	256	100.00	0.00	6 June, 1995
9261-10239	979	29.32	70.68	16 September, 1996
<i>Total</i>	1491	53.39	46.61	



APNIC Services



- 1.6m queries/month
- Increasing by 130K queries/month avg
- Deploying 2 way cluster in July
- Anticipate capacity for 12 months at current growth rates once cluster deployed



APNIC Services

Reverse DNS

- averaging 160 delegation requests per month (8/day)
- increasing by 25 per month
- “new” activity for APNIC

FTP Repository

- demand continuing to grow

Whois

- now mirroring
JPNIC CCAIR TWNIC KRNIC AUNIC (part)

APNIC - Status Report



Questions?

<http://www.apnic.net>